



Buckingham Rowing Club

(TAS) inc.

(Inaugurated 1910)
New Town Bay Reserve
ABN 57 477 011 489

GPO Box 1093
Hobart 7001

2005 KIRBY CUP Saturday 8th October 2005

Notice of Race

Buckingham Rowing Club is pleased to invite entries to its annual season opener event, the Kirby Cup Regatta on Saturday 8th October.

For many years the Kirby Cup has held the tradition as being the opening event for the Tasmanian rowing season. As we near the centenary of the Buckingham Rowing Club (1910-2010) this year's event promises to be bigger and better than ever.

Entries

Entries can be made by completion of the attached entry form and payment of the prescribed entry fee of \$5.00 per seat payable by Tuesday 4th October. Late entries may be made up until 8:00AM on the morning of the race. However, the Race Committee reserves the right to charge a late entry fee of \$10.00 per seat for entries received after the Tuesday 4th deadline.

Entries can be mailed to Buckingham Rowing Club, PO Box 1093, Hobart 7001. or emailed to pwebberley@boags.com.au. A race office will be in place in the BRC Clubrooms from 7:30AM to accept late entries and payments.

Event Categories.

Entries for the following classes will be accepted;

- Single Scull (Men's/women's combined)
- Double Scull (Men's/women's combined)
- Quad Sculls (Men's/women's, coxed or coxless)
- Sweep Four (Men's/women's, coxed or coxless)

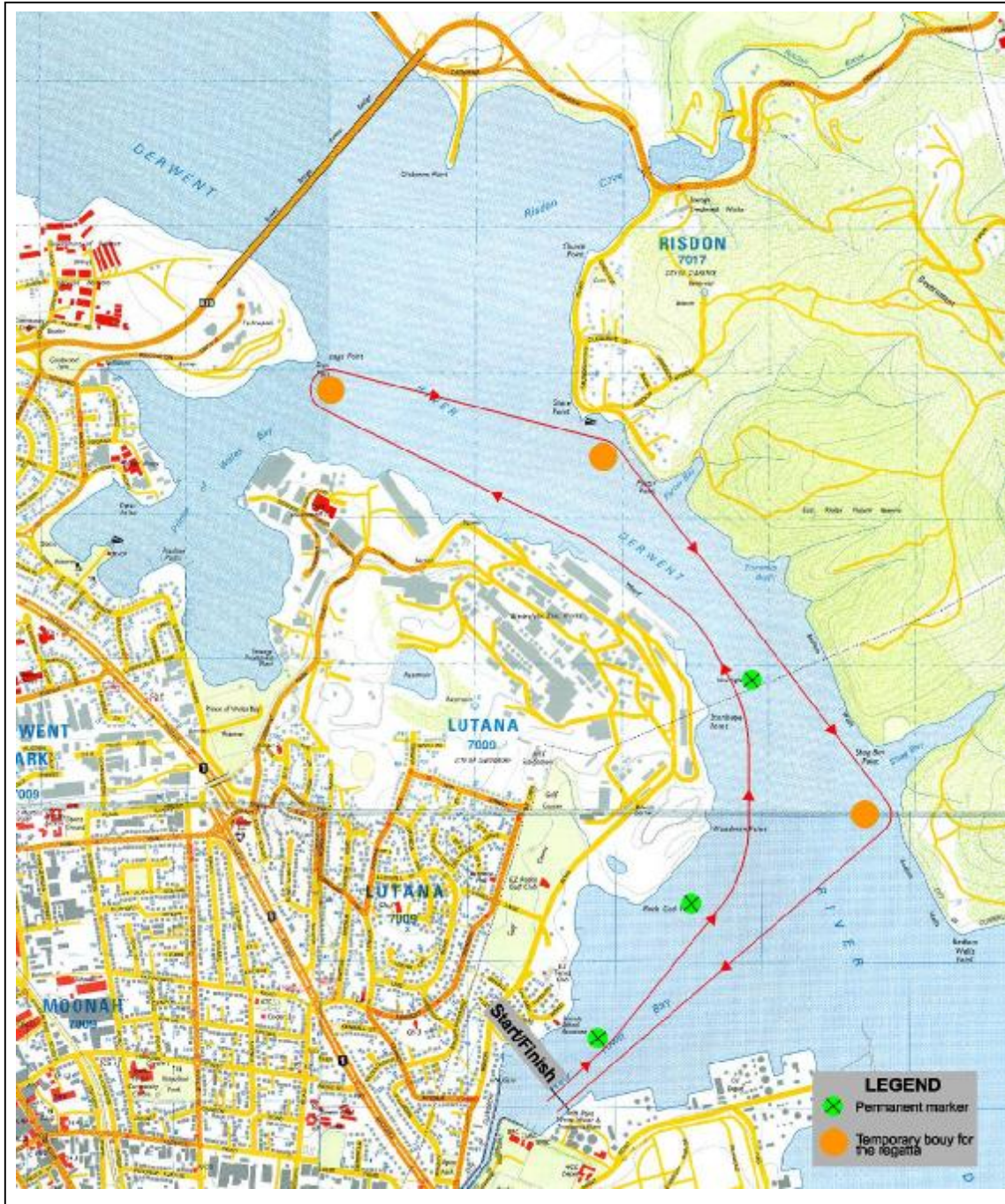
Mixed entries will be accepted and handicapped accordingly. All events will be of a handicap start with the first start time scheduled for 9:00 AM.

Briefing

A pre race Briefing will be held at the BRC clubrooms at 8:20. At the briefing any special announcements such as changes to the course due to the weather will be made. Attendance to the briefing is **strongly recommended**.

Course

The course for the Kirby Cup will a long distance “around the buoys” format as used in previous years (see course map below). The course distance will be approximately 7200 metres.



Course map

Start Line

The start line will be set in New Town Bay at a distance of approximately 50 metres east of the BRC launching ways. The starter will be located along the shoreline clearly identified with a sign marked "Starter". The start line will be an imaginary line set between a white post at the starters position and "Red" cylindrical buoy set approximately 30 metres and perpendicular to the shoreline. (See attached map).

Course Marker Buoys

The course marker buoys will be either;

- Permanent navigational markers or,
- large (1.0m high x 0.6 m diameter.) cylindrical "Day-Glo" orange markers buoys anchored in place on the day

(Please refer to attached course map for approximate location of turning marks).

At each turning mark on the course will be a safety/referee launch to assist crews to identify turning marks. Once again, attendance to the pre-race briefing is recommended to familiarise yourself with the course.

Start Procedure

All events will be of a handicapped type start with the first single scull event scheduled to start at 9:00AM. Handicaps will be set and posted on the boatshed noticeboard as soon as possible prior to the pre race briefing.

It is the responsibility of every crew to know their start time before proceeding onto the water.

Rules for Rounding Marks

Overtaking boats must keep clear.

When rounding a mark the overtaking boat must either round the mark on the outside of the boat to be overtaken or wait until the boat to be overtaken has rounded the mark and is on a course for the next mark.

The referees posted at each turning mark have the authority disqualify any crew who he believes has unfairly disadvantaged another crew.

Presentations

Trophy presentations will commence shortly after completion of all events. Approximately 10:30 AM.

Information

If you require more information please contact:

Club Captain, Paul Webberley

Ph. 62730220, Bh. 62309111, Mobile. 0402 46 2929, or